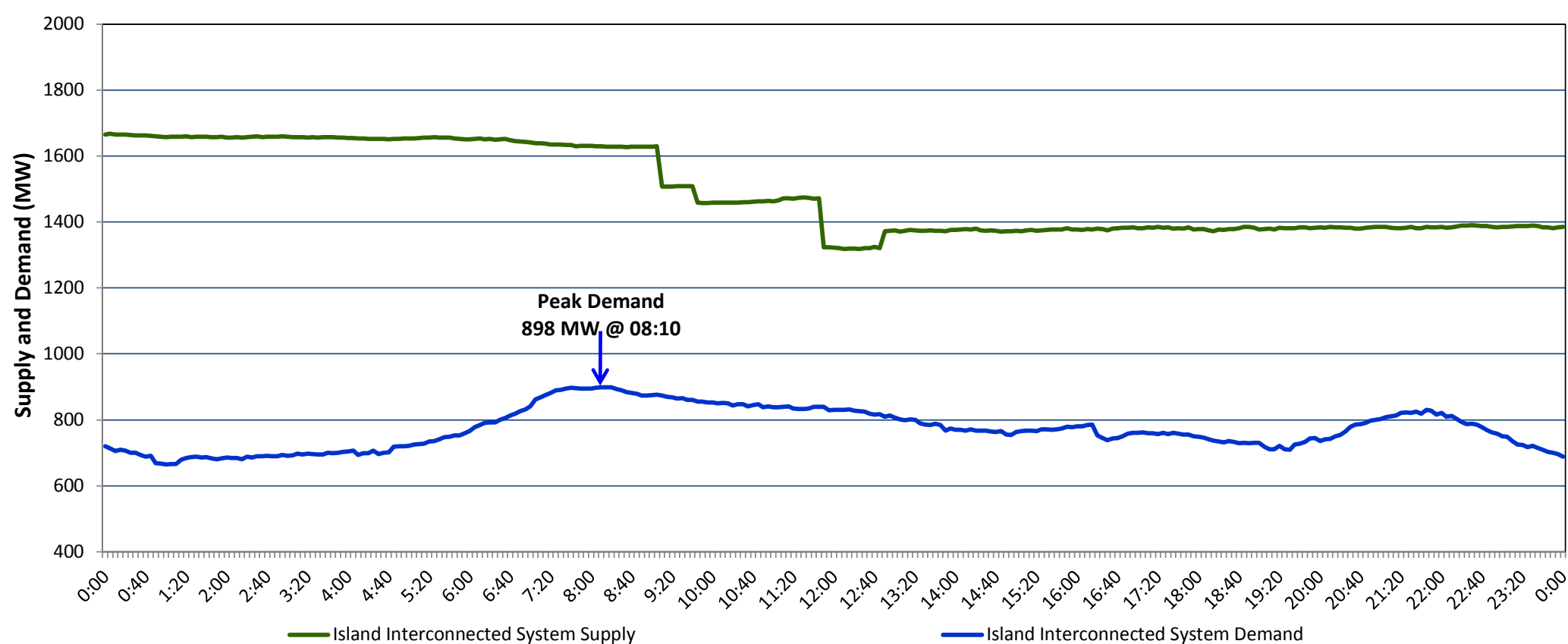


**Newfoundland Labrador Hydro (NLH)
Supply and Demand Status Report Filed Thursday, June 01, 2017**

**Section 1
Island Interconnected System Supply and Demand
Actual 24 Hour System Performance For Wednesday, May 31, 2017**



Supply Notes For May 31, 2017

1,2

- A As of 2003 hours, May 03, 2017, Bay d'Espoir Unit 3 unavailable due to planned outage (76.5 MW).
- B As of 1510 hours, May 07, 2017, Bay d'Espoir Unit 4 unavailable due to planned outage (76.5 MW).
- C As of 0830 hours, May 09, 2017, Stephenville Gas Turbine unavailable due to planned outage 25 MW (50 MW).
- D As of 1300 hours, May 16, 2017, St. Anthony Diesel Plant available at 7.7 MW (9.7 MW).
- E As of 1544 hours, May 19, 2017, Hawke's Bay Diesel Plant available at 2.5 MW (5 MW).
- F As of 0826 hours, May 23, 2017, Holyrood Unit 1 available at 110 MW (170 MW).
- G As of 0810 hours, May 24, 2017, Hinds Lake Unit unavailable due to planned outage (75 MW).
- H As of 0259 hours, May 30, 2017, Holyrood Unit 2 available at 165 MW (170 MW).
- I At 0910 hours, May 31, 2017, Holyrood Combustion Turbine unavailable due to planned outage (123.5 MW).
- J At 0942 hours, May 31, 2017, Hardwoods Gas Turbine unavailable (50 MW).
- K At 1147 hours, May 31, 2017, Holyrood Unit 3 unavailable due to planned outage 147 MW (150 MW).
- L At 1248 hours, May 31, 2017, Hardwoods Gas Turbine available (50 MW).

**Section 2
Island Interconnected Supply and Demand**

Thu, Jun 01, 2017	Island System Outlook ³	Seven-Day Forecast	Temperature (°C)		Island System Daily Peak Demand (MW) Forecast
			Morning	Evening	
Available Island System Supply: ⁵	1,360 MW	Thursday, June 01, 2017	7	10	935
NLH Generation: ⁴	1,070 MW	Friday, June 02, 2017	6	11	965
NLH Power Purchases: ⁶	85 MW	Saturday, June 03, 2017	7	10	890
Other Island Generation:	205 MW	Sunday, June 04, 2017	8	9	865
Current St. John's Temperature:	7 °C	Monday, June 05, 2017	5	4	1,010
Current St. John's Windchill:	N/A °C	Tuesday, June 06, 2017	5	7	920
7-Day Island Peak Demand Forecast:	1,010 MW	Wednesday, June 07, 2017	5	5	930

Supply Notes For June 01, 2017

3

- Notes:
1. Generation outages for running and corrective maintenance are included. These are not unusual for power system operations. They generally do not impact customer supply. The power system operators schedule outages to system equipment whenever possible to coincide with periods when customer demands are low and sufficient supply reserves are available. However, from time to time equipment outages are necessary and reserves may be impacted.
 2. Due to the Island Interconnected System being isolated from the larger North American grid, when there is a sudden loss of large generating units some customer's load must be interrupted for short periods to bring generation output equal to customer demand. This automatic action of power system protection, referred to as under frequency load shedding, is necessary to ensure the integrity and reliability of system equipment. Under frequency events typically occur 5 to 8 times per year on the Island Interconnected System and the resultant customer load interruptions are generally less than 30 minutes.
 3. As of 0800 Hours.
 4. Gross output including station service at Holyrood (24.5 MW) and improved NLH hydraulic output due to water levels (35 MW).
 5. Gross output from all Island sources (including Note 4).
 6. NLH Power Purchases include: CBPP Co-Gen, Nalcor Exploits, Rattle Brook, Star Lake, Vale capacity assistance (when applicable), and Wind Generation.

**Section 3
Island Peak Demand Information
Previous Day Actual Peak and Current Day Forecast Peak**

Wed, May 31, 2017	Actual Island Peak Demand ⁸	08:10	898 MW
Thu, Jun 01, 2017	Forecast Island Peak Demand		935 MW

Notes: 8. Island Demand is supplied by NLH generation and purchases, plus generation owned and operated by Newfoundland Power and Corner Brook Pulp & Paper (Deer Lake Power, DLP).